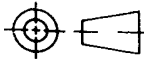


DRAWING NUMBER
A154164

THIRD ANGLE
PROJECTION
TO B.S. 308



FOR GENERAL TOLERANCES & FINISHES
SEE PENNY & GILES STANDARD 55-301 FOR
GEOMETRIC TOLERANCES SEE B.S. 308 Pt 3

APPROX
GRID REF.

HOLE
REF.

No. OF
HOLES

HOLE DATA

DESCRIPTION

POS
TOL.

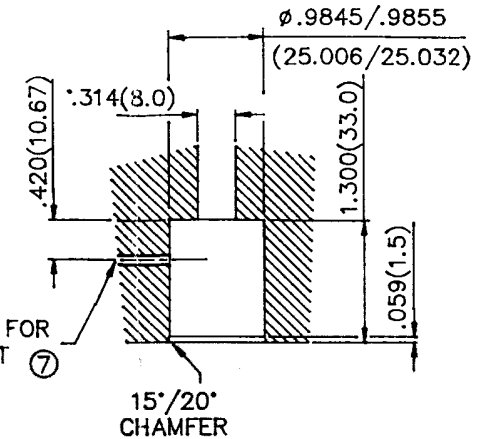
IF IN DOUBT ASK

HLP100 INSTALLATION KIT

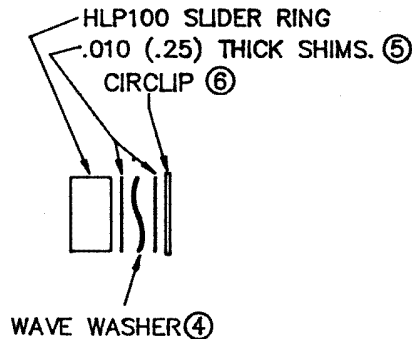
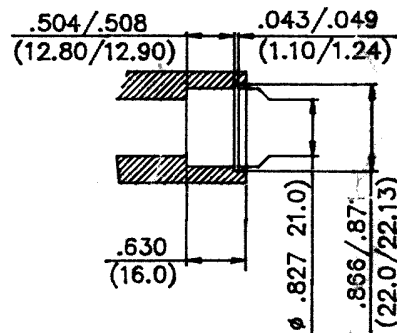
ITEM	DESCRIPTION	PART NO	QTY
1	O RING 16.4mm ID (HLP100/EM/EI)	16-418-376	1
2	O RING 20.6mm ID (HLP100/I)	16-418-377	1
3	ANTI-EXTRUSION RING (HLP100/I)	16-418-378	1
4	WAVE WASHER	16-318-379	1
5	SHIM P54165		2
6	CIRCLIP	16-918-382	1
7	GRUB SCREW M5	16-313-830	1

SUGGESTED
HLP100 INTERNAL
CYLINDER REAR BULKHEAD
DESIGN

USE 'O' RING ② + ③



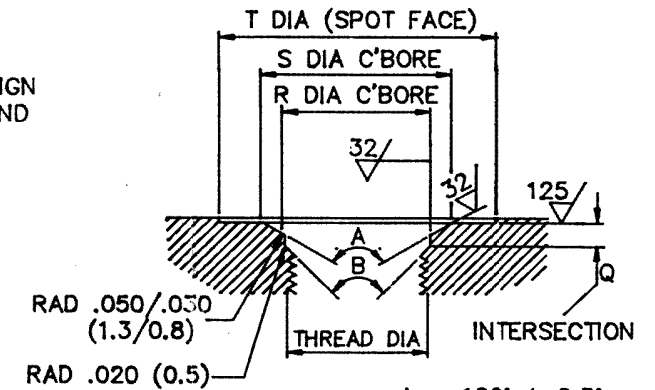
SUGGESTED
HLP100 EXTERNAL AND INTERNAL
PISTON DESIGN TO ACCOMMODATE
HLP100 SLIDER RING



SUGGESTED
HLP100 EXTERNAL
CYLINDER REAR BULKHEAD DESIGN
FOR MOUNTING BOTH METRIC AND
IMPERIAL VARIATIONS

USE 'O' RING ①

THREAD TO BE :
SQURE TO SPOTFACE
WITHIN .005 (.13)
CONCENTRIC TO R AND
S WITHIN .005 (.13)



BECAUSE OF THE MULTIPLICITY OF POTENTIAL APPLICATIONS THE
INSTALLATION DETAILS SHOWN ABOVE ARE SUGGESTIONS ONLY,
THE USER SHOULD ENSURE THAT THE DESIGN, METHOD OF ASSEMBLY
AND MATERIALS USED ARE SATISFACTORY FOR THE INSTALLATION.

THREAD	Q	R DIA	S DIA	MIN TORQUE	T SPOT FACE
3/4 16-UNF 2A (HLP100/EI)	0.094 (2.4)	0.769 (19.53)	0.875 (22.3)	370 lbf/in 42.0 Nm	1.450 (36.83)
M20 X 1.5 6g (HLP100/EM)	0.094 (2.4)	0.808 (20.52)	0.914 (23.21)	520 lbf/in 58.8 Nm	1.450 (36.83)

MATERIAL:-	FINISH:-	TOLERANCES	SCALE: 1:1	ISSUE	1	2											
CHECKED			DIMS: INCH(MM)	DATE	19.7.90	22.11.90											
TRACED				CHANGE	8615/5	8615/7											
<p>Penny + Giles POSITION SENSORS LIMITED</p>				<p>TITLE: SUGGESTED HLP100 INSTALLATION DETAILS</p>				<p>SIZE A3</p>		<p>DRAWING NUMBER A154164</p>							