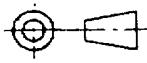


DRAWING NUMBER
D42988

THIRD ANGLE PROJECTION TO B.S. 308



FOR GENERAL TOLERANCES & FINISHES SEE PENNY & GILES STANDARD 55-301. FOR GEOMETRIC TOLERANCES SEE B.S. 308 Pt 3.

APPROX. GRID REF.

HOLE REF.

NO. OF HOLES

HOLE DATA

DESCRIPTION

POS. TOL.

USED ON WE 7199 IF IN DOUBT ASK

D or CAT. No.

CC
QC
SALES

M.A. or S.A.

D.I.S. or M.R.I.

D.O. REFS.

D15159

SAME AS D4142B

SUB-MASTER FROM:- D4142B

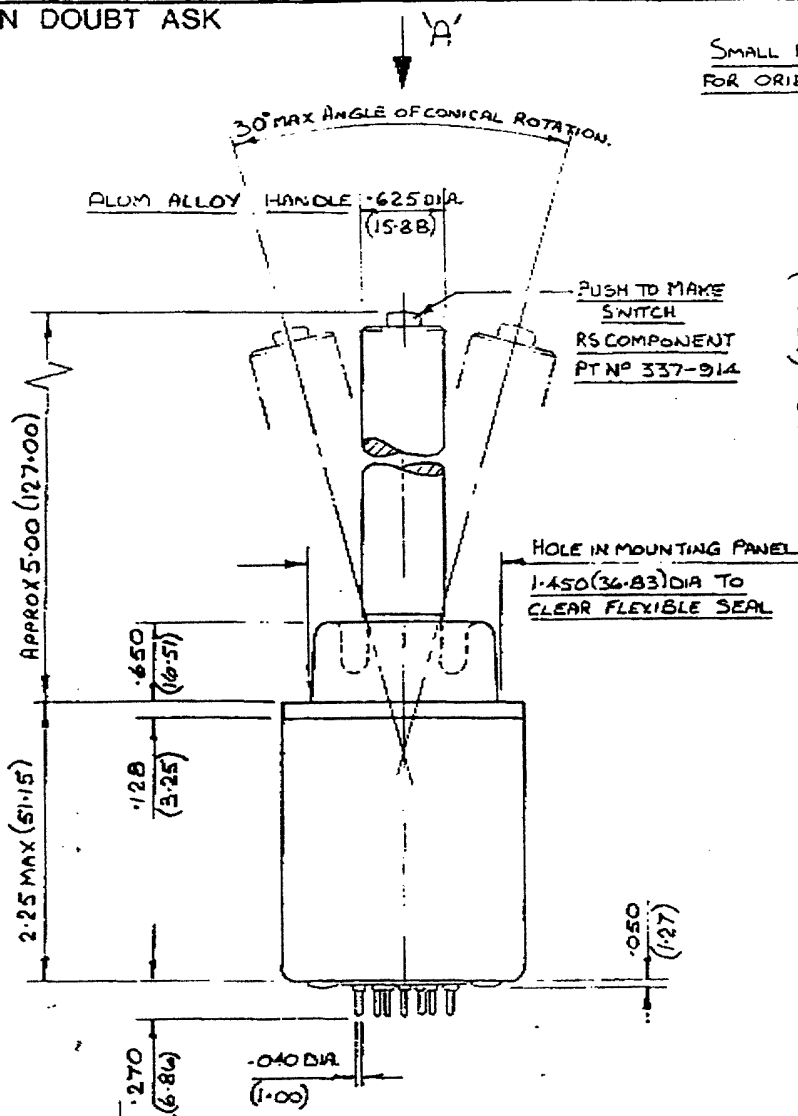
APPROVED

ARC

CHECKED ARC

TRACED

DRAWN M.B. JULEY



VIEW ON ARROW A

SPECIFICATION DATA.

RESISTANCE AXIS X'-X'	2 KΩ ± 10%
RESISTANCE AXIS Y'-Y'	2 KΩ ± 10%
RESISTANCE TOLERANCE	± 10%
CENTRE TAP WIDTH	6% TO 8% OF TRAVEL
CENTRE TAP POSITION	50% APPLIED V ± 3%
INSULATION RESISTANCE	> 50MΩ AT 500V d.c.
TEMPERATURE RANGE	-20°C TO +70°C
FORCE REQUIRED AT END OF STICK FOR F.S.D.	300gm.
THIS UNIT WILL NOT SELF CENTRE	
PRESS TO MAKE SWITCH IN HANDLE RATING 250 V d.c 0.5A	

MATERIAL :-	FINISH :-	TOLERANCES	SCALE: 1:1
			DIMS: INS (mm)

ISSUE	1
DATE	2.7.87
CHANGE	0261

Penny & Giles Christchurch, Dorset. U.K.

TITLE: JOYSTICK CONTROLLER 'PUT AND STAY'

SIZE A3

DRAWING NUMBER

D42988