

DRAWING NUMBER:

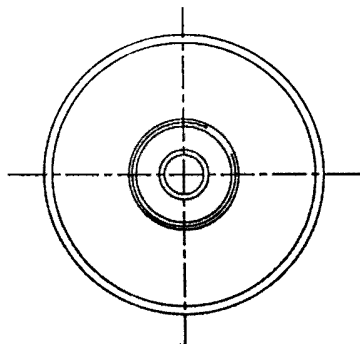
D43822

CUSTOMER PART NUMBER 001 000112

USED ON

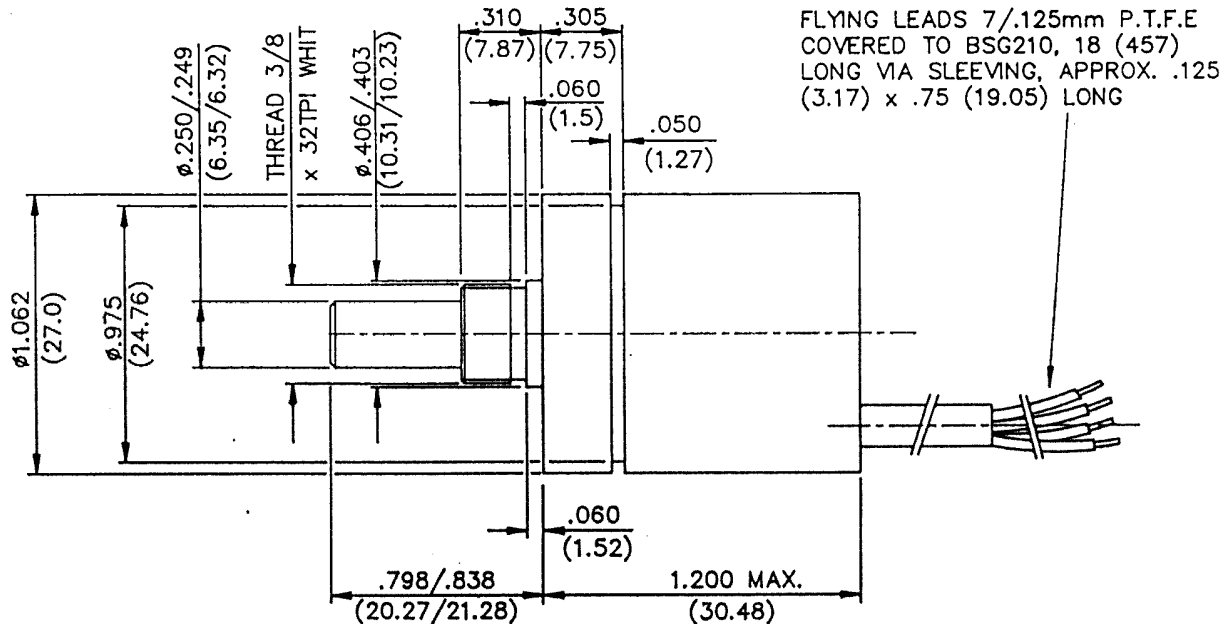
W35419
P & C
TRANSDUCERS

THIS INSTRUMENT IS SUPPLIED
WITH LOCKNUT & WAVY WASHER



SPECIFICATION DATA

1. SUPPLY VOLTAGE _____ 5Vd.c ±10%
2. SUPPLY CURRENT _____ 2mA (NOMINAL)
3. LIGHT SOURCE _____ Ga Al As LED's
4. LED LIFE _____ >100,000 HRS @ RATED SUPPLY
5. LIGHT SENSORS _____ PHOTOTRANSISTORS
6. RESOLUTION _____ 200 PULSES PER SHAFT REV. PER OUTPUT CHANNEL
7. OUTPUT FORMAT _____ SQUARE WAVE, CHANNEL "A" LEADS CHANNEL "B" BY 90° ELECTRICAL FOR CLOCKWISE SHAFT ROTATION (VIEWED ON SHAFT END)
LOGIC "1" = 4V MIN.
LOGIC "0" = 0.4V MAX.
(SEE FIG. 1)
8. MAX. OUTPUT SINK CURRENT _____ 4mA (LOGIC "0" < 0.4V)
10mA (LOGIC "0" > 0.4V)
9. TEMPERATURE RANGE _____ -10°C TO +50°C OPERATING
-20°C TO +70°C STORAGE
10. HUMIDITY _____ UPTO 95% (NON CONDENSING)
11. SHAFT SPEED _____ 300RPM (MAX.) OPERATING
3000RPM (MAX.) NON-OPERATING
12. STARTING TORQUE _____ 5gm cm (MAX.)
13. SHAFT LOADING _____ 0.5Kg OPERATING
1.5Kg NON-OPERATING

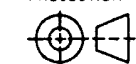


FLYING LEADS 7/.125mm P.T.F.E COVERED TO BSG210, 18 (457) LONG VIA SLEEVING, APPROX. .125 (3.17) x .75 (19.05) LONG

DESIGN
COPYRIGHT
RESERVED:

Data Sheet

THIRD ANGLE PROJECTION



SIZE
A3

D.O. REFS.
IE11/200/LP

SUB-MASTER FROM:

APPROVED

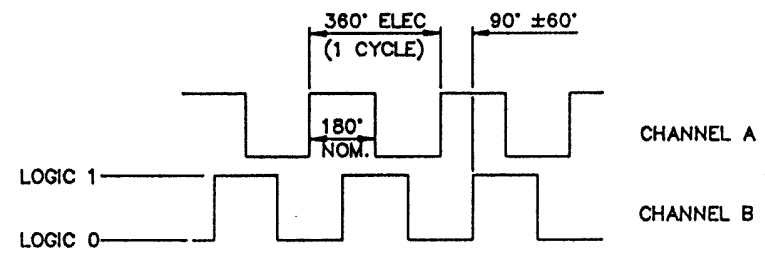
CHECKED

DRAWN
I.HURST



POSITION SENSORS LIMITED,
Christchurch,
Dorset, U.K.

FIG. 1

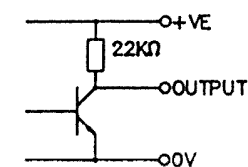


OUTPUT CHARACTERISTICS FOR CLOCKWISE SHAFT ROTATION (VIEWED ON SHAFT END)

FLYING LEAD CONNECTIONS

- RED _____ +VE SUPPLY (4.5V-5.5Vd.c REG.)
- BLACK _____ 0 VOLT COMMON
- YELLOW _____ CHANNEL A OUTPUT
- BLUE _____ CHANNEL B OUTPUT

ENCODER OUTPUT STAGE



ISSUE	1	1A			MATERIAL:—	TOLERANCES	SCALE: 2:1
DATE	14/3/90	10/4/90				±.010(.25)	DIMS: INS(mm)
CHANGE							
FINISH:—	TITLE: LOW POWER INCREMENTAL OPTICAL ENCODER IE11/200/PM		DRAWING NUMBER: D43822				