

DRAWING NUMBER:  
**D44251**

USED ON  
QE12848  
BEATRONIC

©  
DESIGN  
COPYRIGHT  
RESERVED:

Data Sheet

THIRD ANGLE  
PROJECTION

SIZE  
**A3**

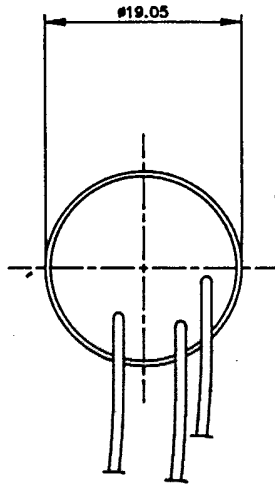
D.O. REFS.

SUB-MASTER  
FROM:-

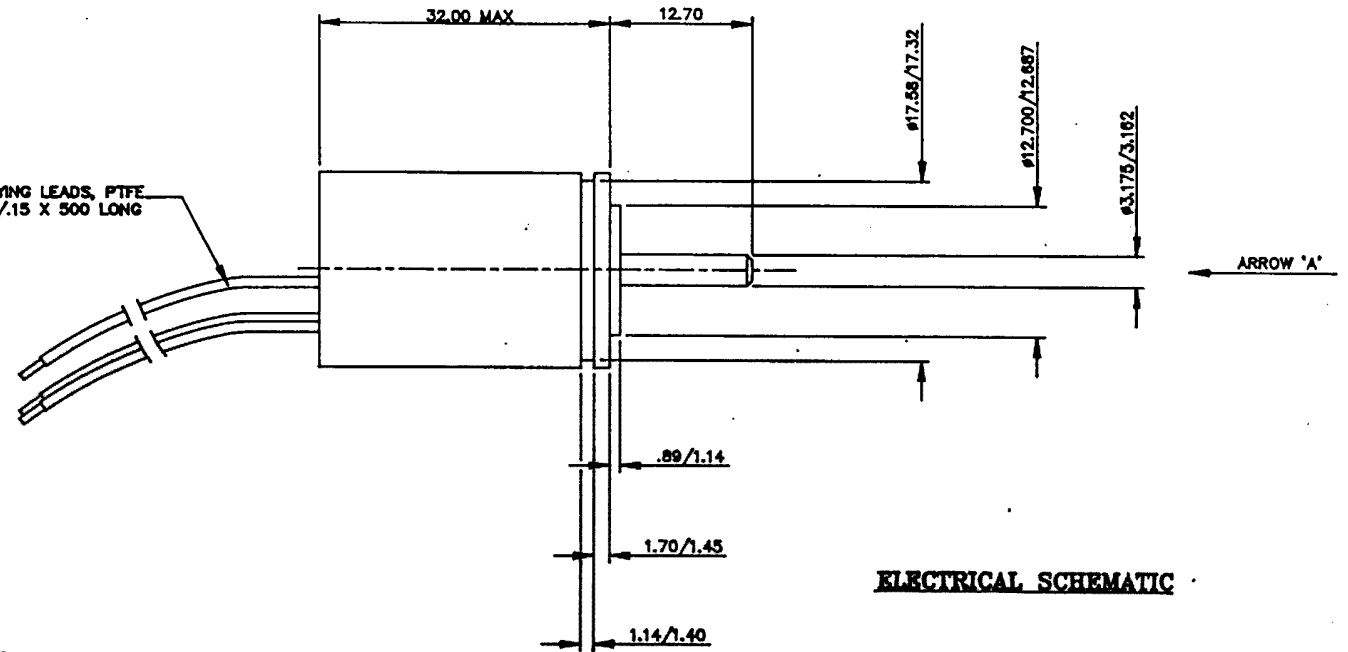
APPROVED

CHECKED  
*[Signature]*

DRAWN  
M. BOOTE



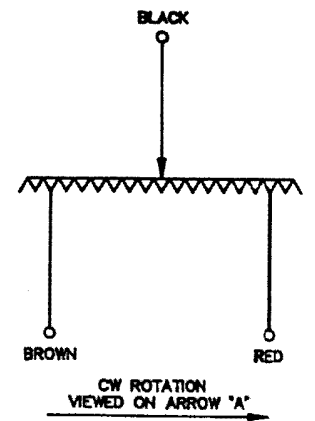
FLYING LEADS, PTFE  
19/.15 X 500 LONG



**SPECIFICATION**

RESISTANCE ±10%	5KΩ
ELECTRICAL ANGLE	340° ± 2°
MECHANICAL ANGLE	380°
INDEPENDENT LINEARITY	± 0.5%
RESOLUTION	VIRTUALLY INFINITE
POWER DISSIPATION	0.5W @ 20°C
OUTPUT SMOOTHNESS	TO MIL-R-39023A GRADE C 0.1%
INSULATION RESISTANCE	>50MΩ @ 500Vdc
WIPER LOAD IMPEDANCE	>0.5MΩ
OPERATIONAL TEMPERATURE RANGE	-55°C TO +90°C
STARTING TORQUE	150gcm MAX
WIPER VELOCITY	3000"/SEC MAX
LIFE EXPECTANCY	>100 X 10 <sup>8</sup> CYCLES OVER ± 75° @ 3Hz
SEALING	IP65

**ELECTRICAL SCHEMATIC**



**Penny+Giles**

POSITION SENSORS LIMITED,  
Christchurch,  
Dorset, U.K.

ISSUE	1	MATERIAL:—	TOLERANCES	SCALE: 2:1
DATE	3-2-82	CASE AL ALLOY	±.25	DIMS:INS(mm)
CHANGE	9018/1	SHAFT ST STEEL		
FINISH:— CASE ANODISE SHAFT CLEAN		TITLE: <b>HRP08/1F (SEALED)</b>	DRAWING NUMBER: <b>D44251</b>	